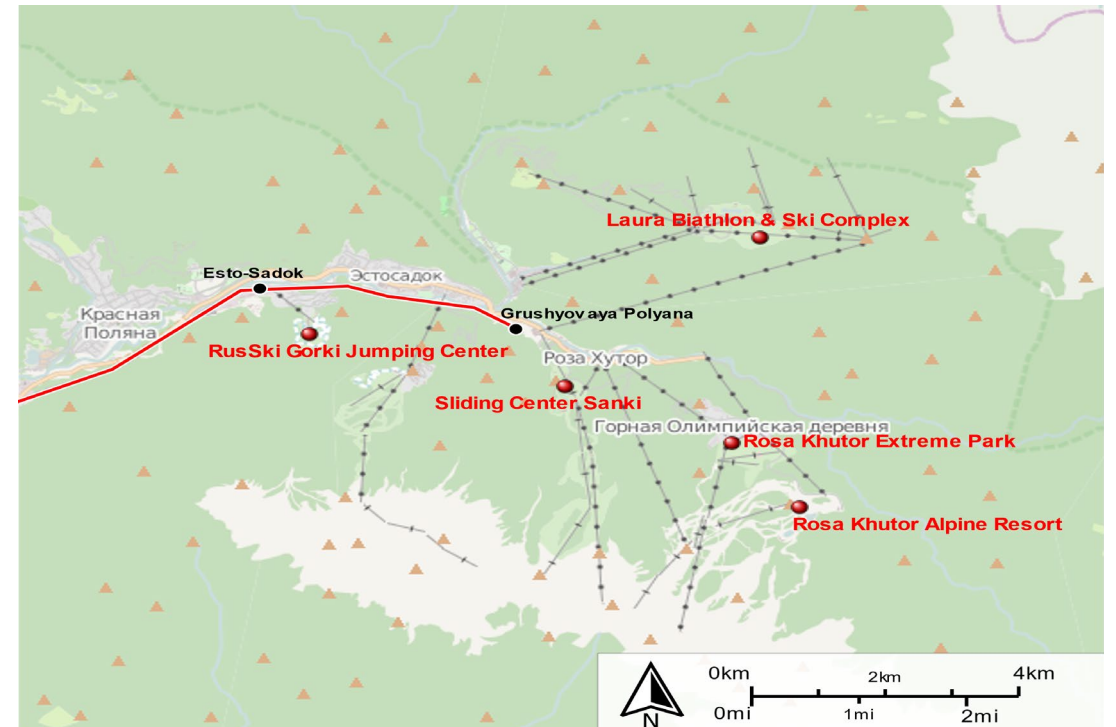


Maxim Romanov  
Head of vocational  
education center  
Sochi State University

The impact of large-scale events on the development of territories (on the example of post-Olympic Sochi)

# Sochi 2014 Olympic venues – a brief overview.



Source: [https://en.wikipedia.org/wiki/2014\\_Winter\\_Olympics](https://en.wikipedia.org/wiki/2014_Winter_Olympics)

# Olympic venues legacy. Coastal cluster.

KEY VENUES	GAMES-TIME	AFTER
Olympic Park	Sports campus	A street-circuit. Hosts F1 Russian Grand Prix.
Fisht Olympic Stadium	Opening and Closing Ceremony	2018 FIFA World Cup, Football club Sochi home venue.
Bolshoy Ice Dome	Ice hockey	Hockey club Sochi home venue.
Shayba Arena	Ice hockey	'Sirius' Educational Center.
Iceberg Skating Palace	Figure skating, short-track speed skating	Sport venue, Concert Hall.
Adler Arena Skating Center	Speed skating	Tennis Academy.
Ice Cube Curling Center	Curling	Curling competitions.
Olympic Village	Athletes housing	Hotels and apartments
Main Media Center	Press and broadcasting center	'Sirius' Educational Center.

# Olympic venues legacy. Mountain cluster.

Key venues	Games-time	After
Sanki Sliding Center	Bobsleigh, luge and skeleton.	Sport venue
Laura Cross-Country ski and Biathlon Center	Biathlon and cross-country skiing.	Sport venue, ski resort.
Rosa Khutor Alpine Resort	Alpine skiing	Sport venue, ski resort.
Rosa Khutor Extreme Park	Freestyle skiing, snowboarding	Sport venue, ski resort.
RusSki Gorki Jumping Center	Ski jumping, Nordic combined	Sport venue, ski resort.
Olympic Villages	Athletes housing	Hotels and apartments
Mountain Media Center	Press and broadcasting center	Casino

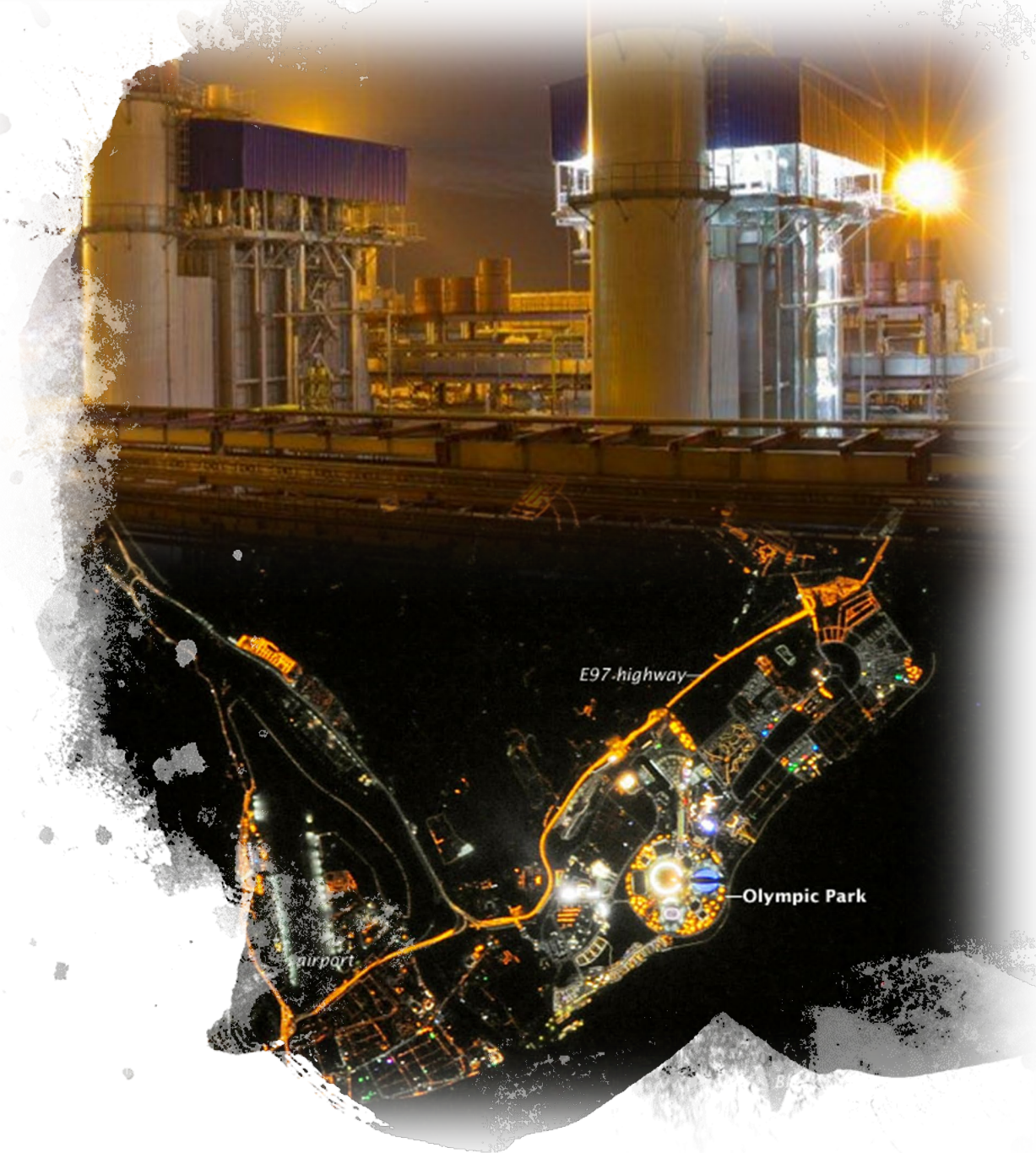
# Transportation infrastructure

- Sochi International Airport new terminal and runway extension.
- Sochi Light Metro (Adler – Krasnaya Polyana).
- Adler – Krasnaya Polyana highway.
- Cable-car network in Krasnaya Polyana.
- Double track for existing railway along the coast.
- Two Sochi city bypass highways.
- City ring roads, underground pedestrian crosses etc.



# Games and city utility infrastructure

- Adler power station.
- Sochi power station.
- Power supply and gas supply lines.
- Sewage treatment facilities.
- City utility renovation (power, water, sewage lines, fibre-optic, gas etc).

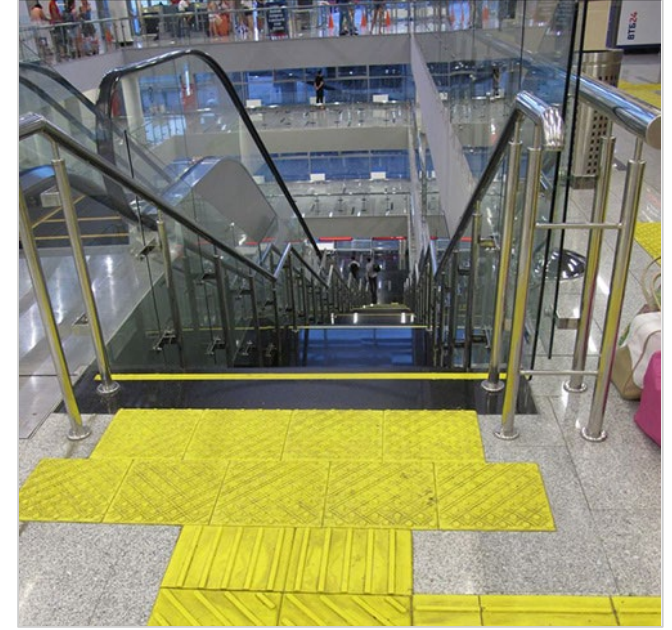


# Accommodation facilities

- 46 new or renovated hotels and lodging of a 27 000-room capacity.
- As of today:
  - 23 five-star hotels;
  - 47 four-star hotels;
  - 170 three-star hotels.
- Eight international brands: Hyatt, Accor, Carlson Rezidor, Rixos, Marriott, Capella, FRHI, Louvre hotels.
- Certification practice: Sochi, 2018 FIFA World Cup, all-Russian.



# Accessible city



- Olympic and Paralympic venues.
- Transportation.
- City amenities.
- Design standards including the best barrier-free environment practice.

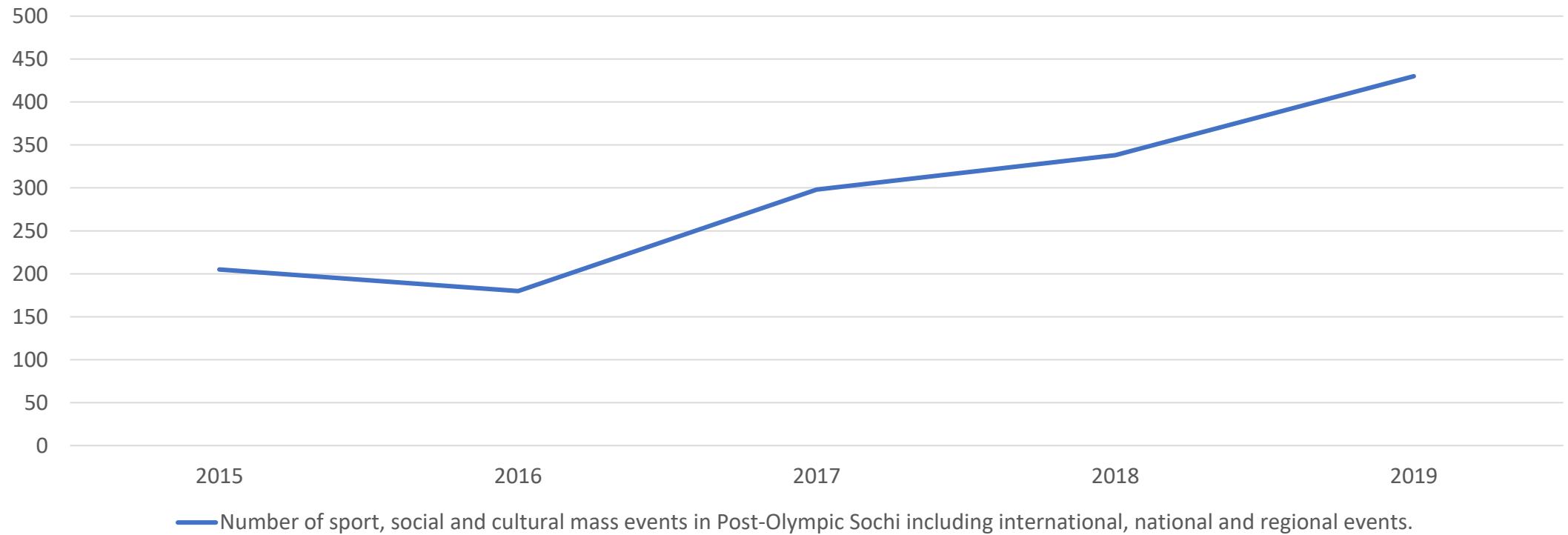


# City look

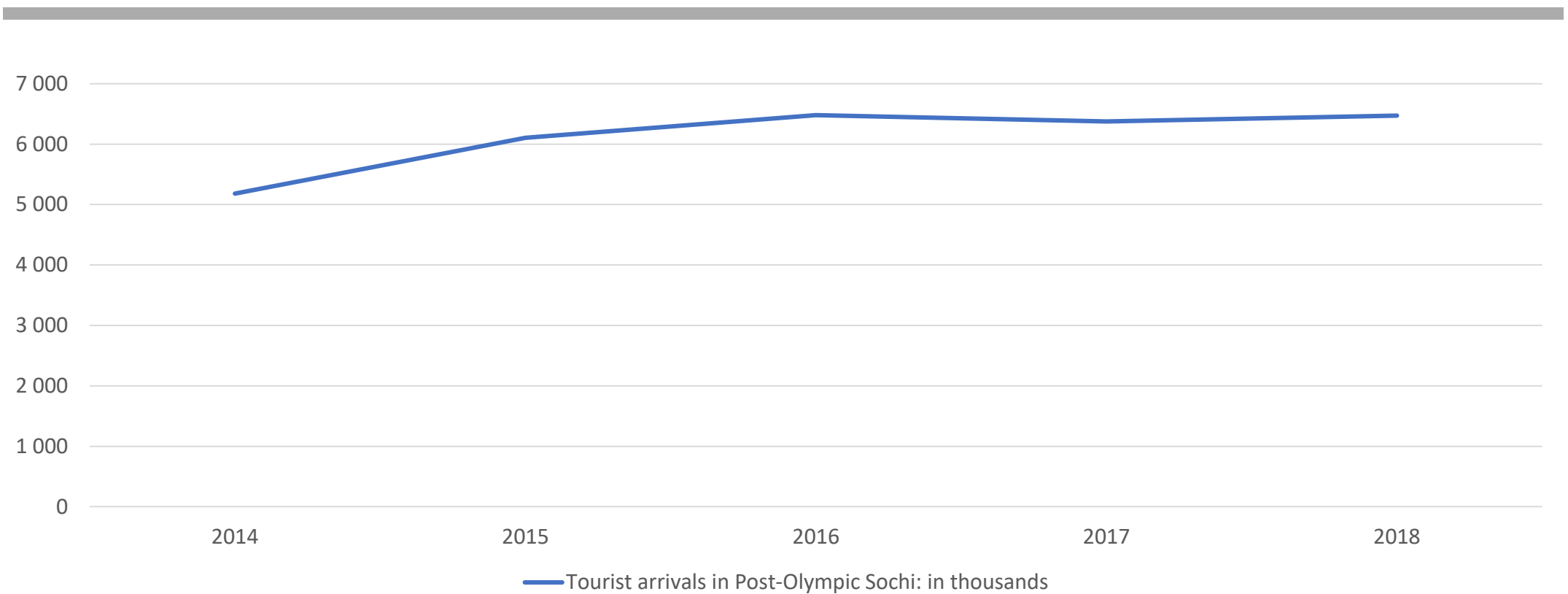
- Public areas renovation:
  - parks,
  - squares,
  - fountains,
  - beaches,
  - pedestrian walks,
  - gardening etc.



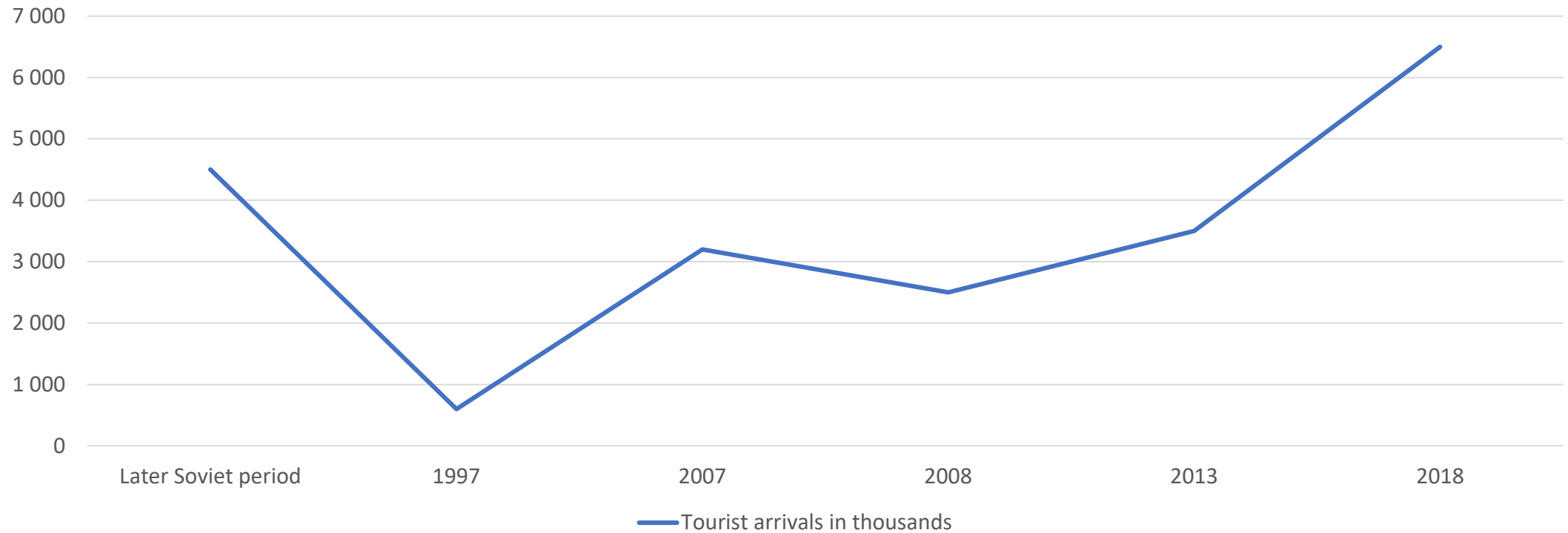
# Events in Post-Olympic Sochi.



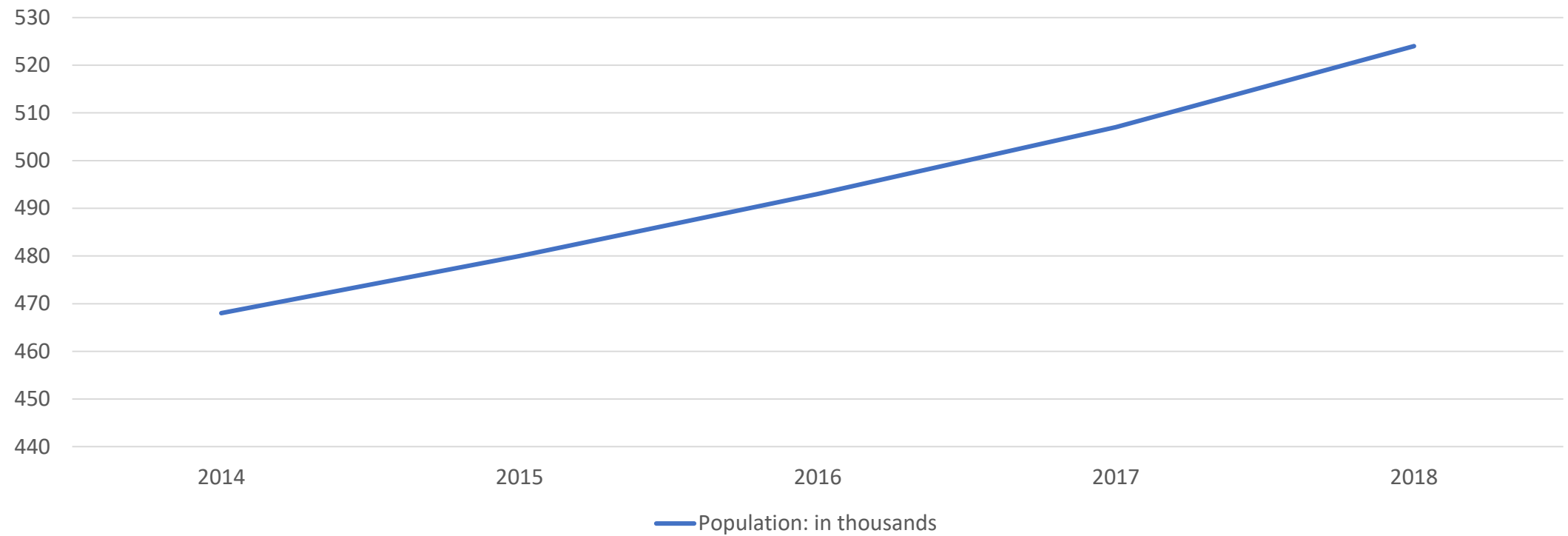
# Tourist arrivals in Post-Olympic Sochi



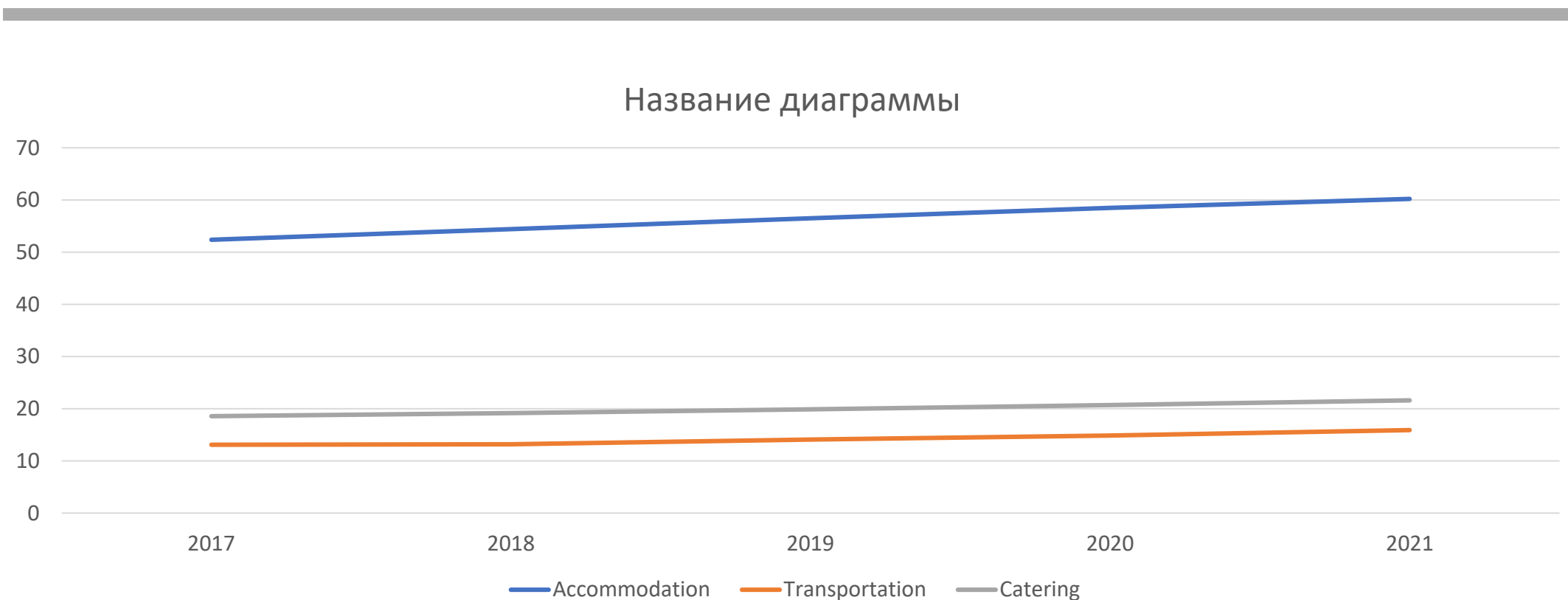
# Tourist arrivals in Sochi – a historic overview



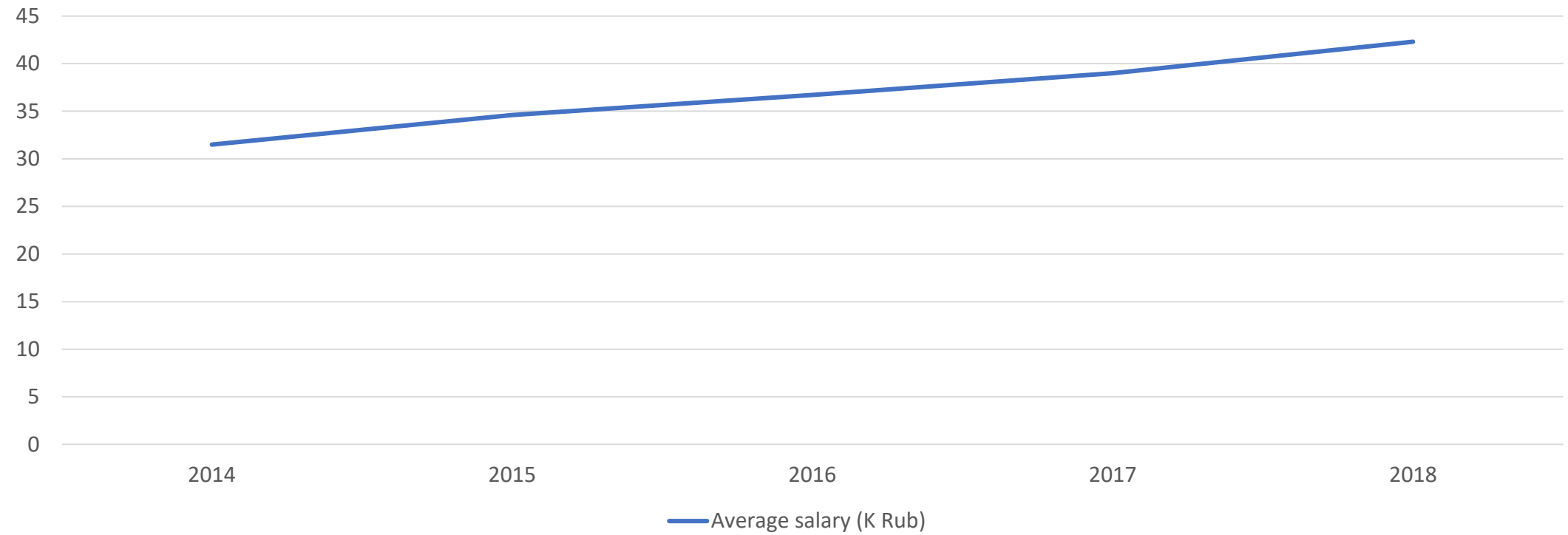
# Population of Post-Olympic Sochi.



# Revenue in a city key areas (B Rub)



# Average salary.



Thank you for your attention